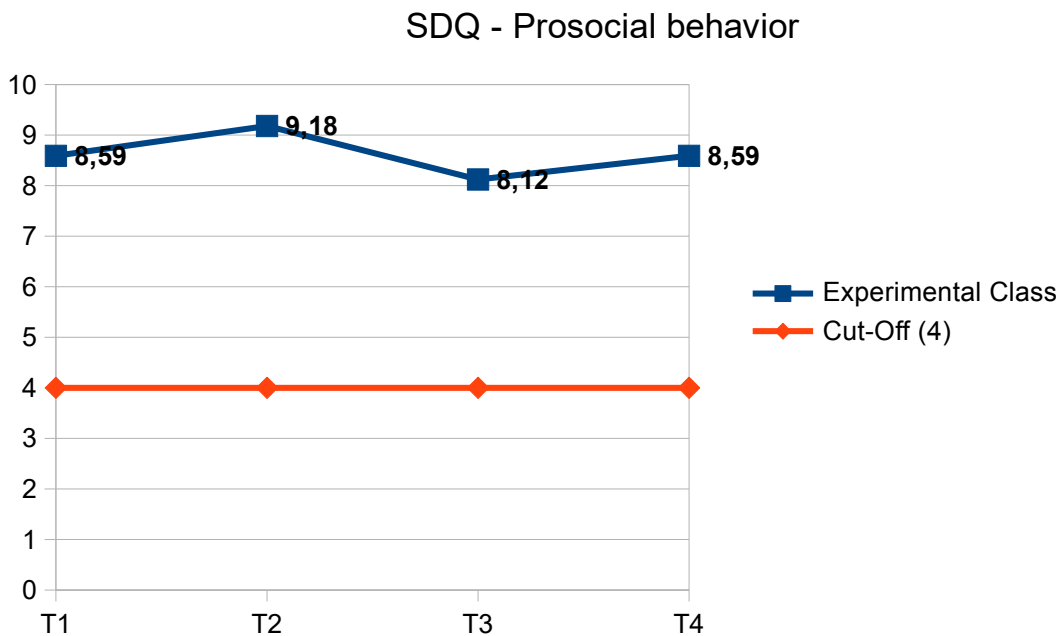
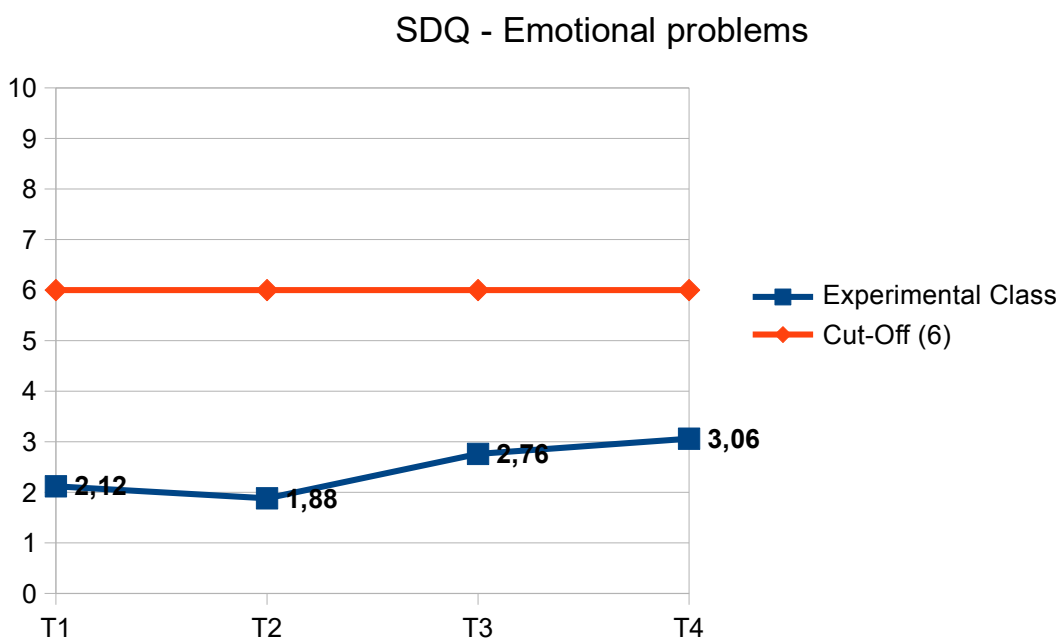


Quantitative Tests – SDQ – Denmark (Experimental Class Friskole)

Here you can see the individual evaluations of the SDQ, which relate to the experimental class (T1–T4).



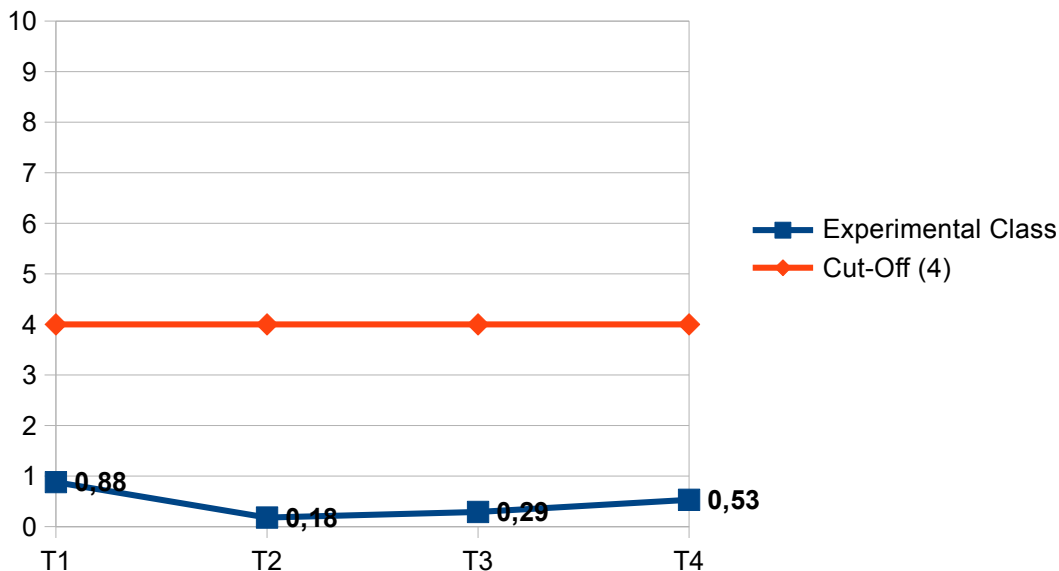
Prosocial behavior reflects individual students' strengths and is considered separately from the other categories. The maximum score is 10 points, representing the highest possible outcome. If the score falls below the cut-off of 4 points, it is classified as „notable.“



The emotional problems category applies to all students in the tested classes. The maximum score is 10 points. If the score exceeds the cut-off of 6 points, it is classified as „notable.“

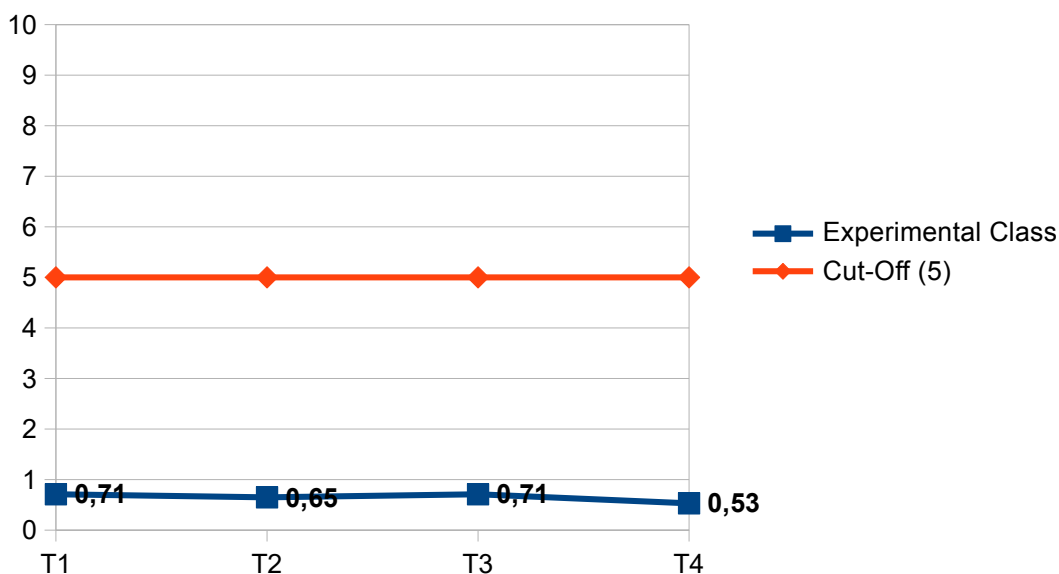
Quantitative Tests – SDQ – Denmark (Experimental Class Friskole)

SDQ - Behavioral problems



The behavioral problems category has a maximum score of 10 points.
If the score exceeds the cut-off of 4 points, it is classified as „notable.“

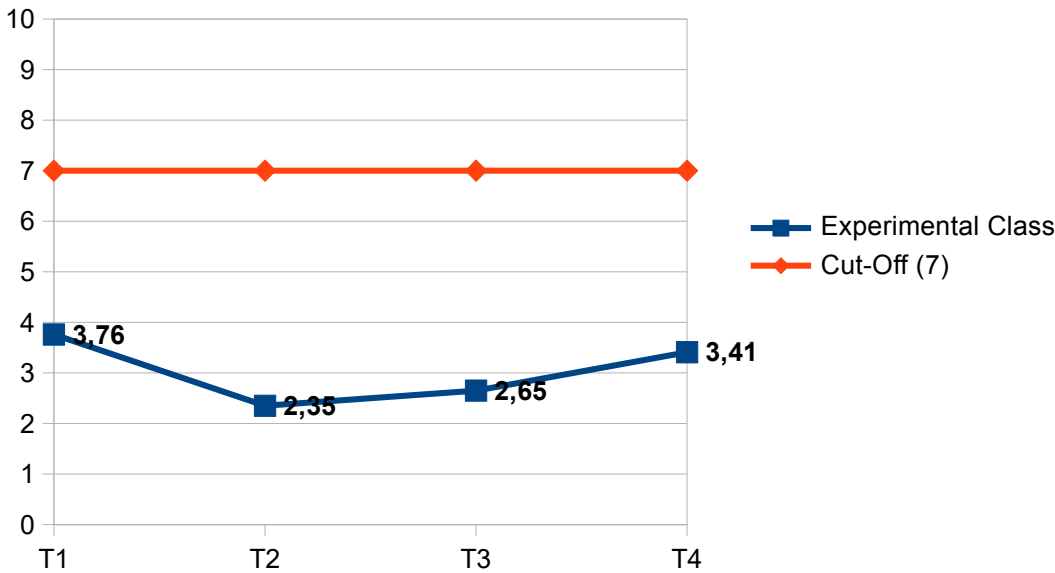
SDQ - Behavioral problems with peers



The peer problems category has a maximum score of 10 points.
If the score exceeds the cut-off of 5 points, it is classified as „notable.“

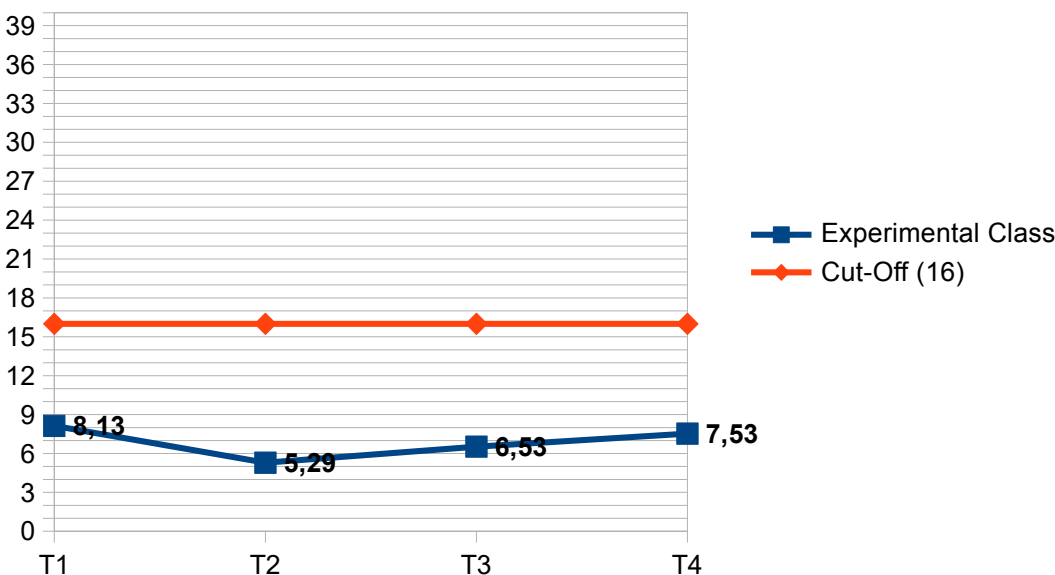
Quantitative Tests – SDQ – Denmark (Experimental Class Friskole)

SDQ - Hyperactivity



The hyperactivity category (in this case) applies to all students in the tested classes. The maximum score is 10 points. If the score exceeds the cut-off of 7 points, it is classified as „notable.“

SDQ - Total difficulty score



The total difficulty score is calculated by summing the values of the subscales (emotional problems, behavioral problems, peer problems, and hyperactivity – prosocial behavior is excluded from this score). The highest and thus poorest possible score is 40, while a lower score indicates a better result for the overall group. The cut-off is set at 16, meaning that reaching a score of 16 is considered „notable.“